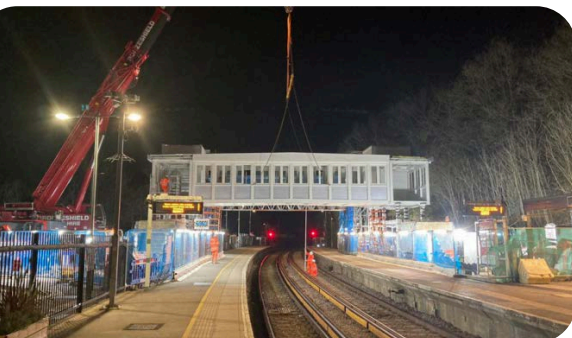
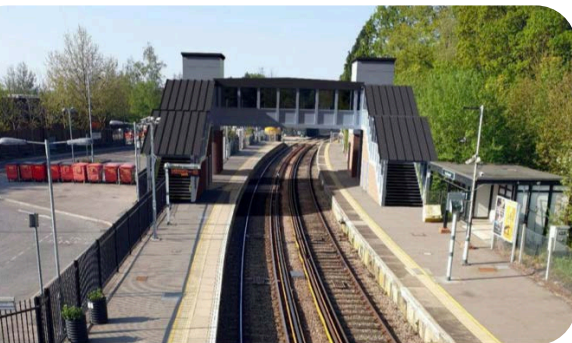




### THE PROJECT

As part of Network Rail's drive to improve accessibility at rail stations, East Grinstead Station has become step-free. A new footbridge with two new lifts is providing step-free access between both platforms.

AMI Projects were awarded the (MEP) mechanical, electrical and telecommunications supply, installation test & commissioning package.



Project Value

**£285K**

Project Started

**Apr  
2022**

Project Ended

**Dec  
2022**

Client

**Bam**

### THE DELIVERABLES

- Main Incoming LV Supplies.
- LV & Earthing Supplies – Cabling & Equipment
- Lighting & Emergency Lighting.
- Cable Management Systems (CMS)
- SISS Station Information Systems.
- CCTV.
- PA Public Address System.
- Ventilation Systems.
- Fire Alarm Systems.

### CHALLENGES & SOLUTIONS

Supply chain issues with specialist equipment on long lead times. Our engineers rose to the challenge, seeking out alternative & compliant solutions to ensure that the project was delivered on time and within budget.

